

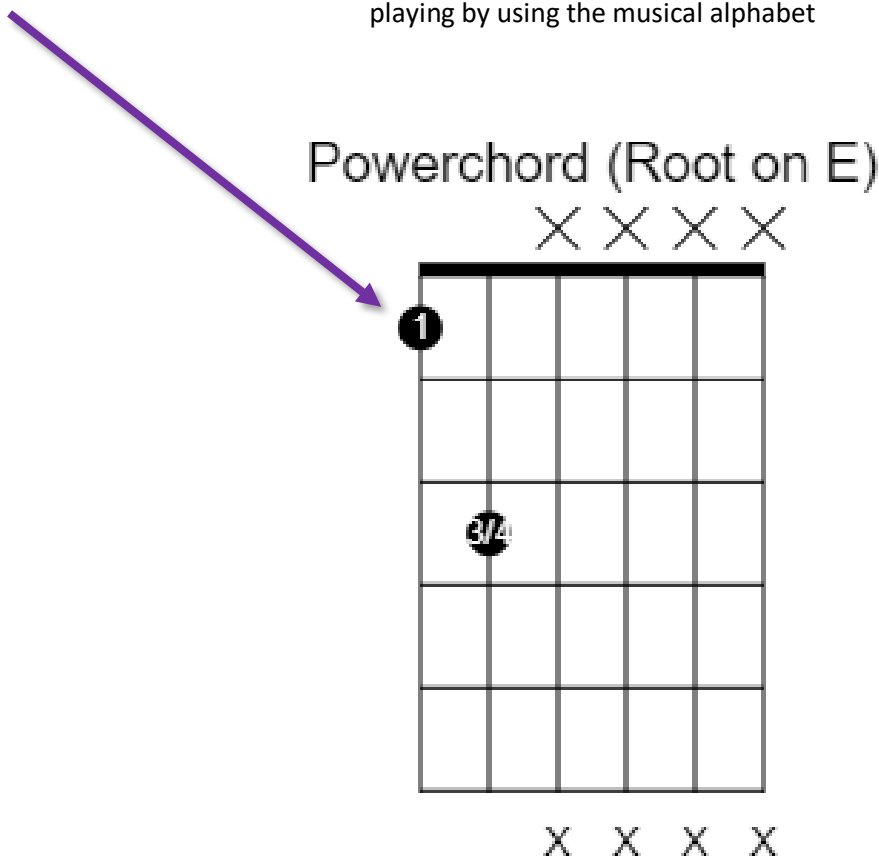
## ROCK SONGS THAT USE POWERCHORDS WITH RIFFS

**REMEMBER..**

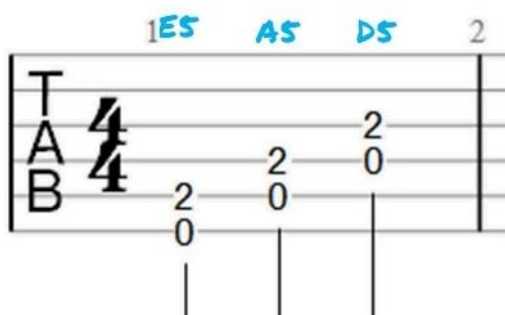
A **powerchord** is a moveable chord, known as a 5<sup>th</sup> chord. So whenever you see a number '5' after a chord name, such as A5, B5, C#5 etc, it means play as a powerchord. It is moveable because when you fret the chord, the same shape can be shifted up and down the neck.

**THE ROOT NOTE SIMPLY MEANS THE NOTE THAT GIVES YOU THE KEY OF THE CHORD.**

ROOT NOTE will always be where the 1<sup>st</sup> finger is. You can now start to work out for yourself what chord you are playing by using the musical alphabet



Powerchords tabbed out look like this:



**JUMPING JACK FLASH'**

1 **B5** 2 **8x D5** 4 **A5** 5 **E5** 6 **B5**

7 **D5** 8 **A5** 9 **E5** 10 **B5**

The tablature is in 4/4 time. The first line shows measures 1-6: measure 1 has notes 9-7-9-7 on strings 2-5; measure 2 has notes 7-9-7-9; measure 3 is a double bar line with '8x' above and notes 7-7-7-7-7-7-7-7 on strings 2-5; measure 4 has notes 7-7-7-7-5-5-5-5; measure 5 has notes 9-9-9-9-9-9-9-9; measure 6 has notes 9-9-9-9-9-9-9-9. The second line shows measures 7-10: measure 7 has notes 7-7-7-7-7-7-7-7; measure 8 has notes 7-7-7-7-7-7-5-7; measure 9 has notes 9-9-9-9-9-9-9-9; measure 10 has notes 7-7-7-7-7-7-7-7 and a circled '9' over a '7' on the 7th string.

**'I LOVE ROCK AND ROLL'**

1 **E5** 2 **A5 B5** 3 **E5** 4 **A5 B5 E5** 5 6

The tablature is in 4/4 time. Measure 1 has notes 2-2-2-2 on strings 2-5. Measure 2 has notes 2-2-4-4 on strings 2-5. Measure 3 has notes 2-2-2-2 on strings 2-5. Measure 4 has notes 2-2-4-4 on strings 2-5. Measure 5 has notes 2-2-2-2 on strings 2-5. Measure 6 has notes 2-2-2-2 on strings 2-5. Measure 7 has notes 2-0-2-0 on strings 2-5. Measure 8 has notes 2-0-3 on strings 2-5.

**'ENTER SANDMAN'**

1 **3x G5 F#5 G5 F#5**

The tablature is in 4/4 time. Measure 1 has notes 0-7-5-6-5-7 on strings 2-5. Measure 2 is a double bar line with '3x' above and notes 5-4-4-5-4 on strings 2-5. Measure 3 has notes 3-0-2-0-2-3-2 on strings 2-5.